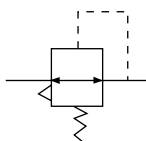


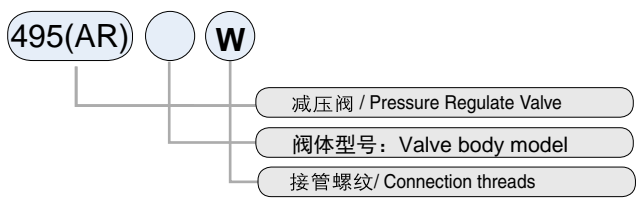
495(AR1000~4000) 系列减压阀 series Pressure Regulate valve



图形符号 Graphical symbols



型号注释 Order Code



技术参数 Specification

保证耐压力/Pressure Resistance	1.5MPa(15kgf/cm ²)
最高使用压力/Max Working Pressure	1.0MPa(10kgf/cm ²)
*调压范围/Pressure Regulating Range	AR1000: 0.05~0.7MPa(0.5~7kgf/cm ²) AR2000~5000: 0.05~0.85MPa(0.5~8.5kgf/cm ²)
环境及流体温度/Ambient And Fluid Temperature	5~6°C
阀型/Valve Type	带溢流型/With Overflow

*调压范围0.02~0.2MPa(0.2~2kgf/cm²) / *Pressure range 0.02~0.2Mpa(0.2~2kgf/cm²) is available

型号 Model	规格/Specifications			配件/Accessories		
	注1) 额定流量 Note 1)/Rated Flow(L/min)	注2) 接管口径 Note1)/Port Size(G)	压力表口径 /Pressure Gauge Size	重量 /Weight(kg)	托架 /Bracket	压力表 /Pressure Gauge
(495)AR1000-M5	100	M5	1/16	0.08	B120	G27-10-R1
(495)AR2000-01	550	1/8	1/8	0.27	B220	G36-10-01
(495)AR2000-02		1/4				
(495)AR2500-02	2000	1/4	1/8	0.27	B220	G36-10-01
(495)AR2500-03		3/8				
(495)AR3000-02	2500	1/4	1/8	0.41	B220	G36-10-01
(495)AR3000-03		3/8				
(495)AR4000-03	6000	3/8	1/4	0.81	B420	G46-10-02
(495)AR4000-04		1/2				
(495)AR4000-06	6000	3/4	1/4	0.94	B420	G46-10-02
(495)AR5000-06	8000	3/4	1/4	1.19		
(495)AR5000-10		1				

注1) 供应压力为0.7MPa (7.1kgf/cm²) 设定压力为0.5MPa(5.1kgf/cm²) 的情况下。
Note 1) On condition that the supply pressure is 0.7MPa(7.1kgf/cm²) and set pressure is 0.5MPa(5.1kgf/cm²).
注2) 接管口径另有Rc、NPT螺纹可供选择/Note2) Rc and NPT thread are available.